
CERTIFICATE OF ANALYSIS

Product Name	Inotocin peptide, Cat.#: 305636 (TFA removed)
Lot No.	MTFA33562-251110
Sequence	C*LITNC*PRG-NH2 (Acetate Salt)
Dissolution condition	100%H2O
Modification	Disulfide bond;acetate salt
Molecular Weight (MW)	973.17
Storage	-20°C

Test Items	Specifications	Results
MW by MS	973.20	Conforms
Purity by HPLC	>95%	99.082%
Endotoxin Content	N/A	N/A
TFA solubility	N/A	N/A
Moisture content	N/A	N/A
Acetic acid content	N/A	N/A
Appearance	White to off-white lyophilized powder	Conforms
Quantity	10 mg	5.0mg*2

NovoPro Bioscience Inc. (hereafter NovoPro) warrants material of said quality at the time of sale. It is the sole responsibility of the customers to determine the adequacy of all materials for any intended or specific purpose or use. NovoPro's sole obligation is to replace the material up to the extent of the purchase price. This warranty applies only to products in original packaging and does not apply to a product which has been tampered with or altered in any way in or which has been misused or damaged by accident or negligence. All claims must be received writing (by fax or email) within 30 days from date when product arrive at the destination city and failure to do so shall constitute a waiver by customers for any and all such claims.

Certified by:



Nov/14/2025

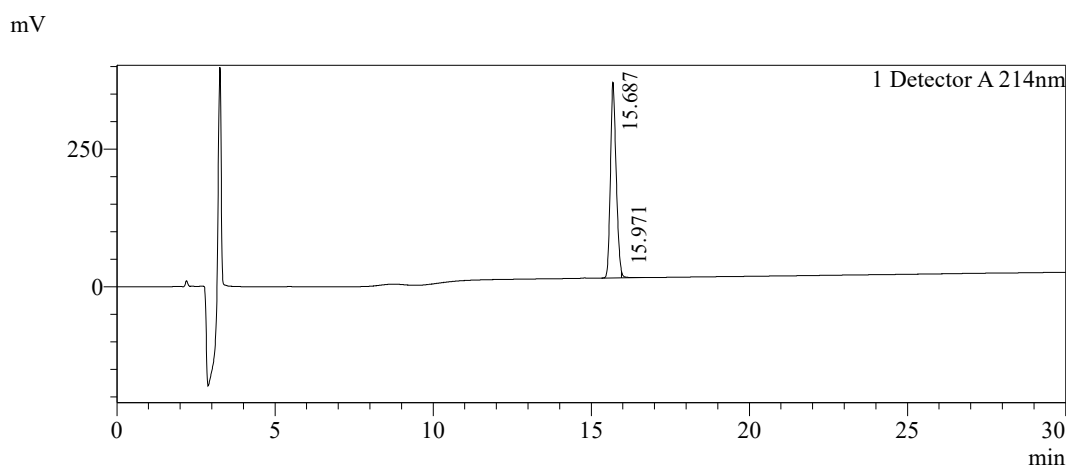
Quality Assurance Department



Sample Information

Order ID	:MTFA33562		
Name	:Inotocin peptide		
Sequence	:C*LITNC*PRG-NH2 (Acetate Salt)		
Lot. No	:MTFA33562-251110		
Pump A	:0.1%Trifluoroacetic in 100% water		
Pump B	:0.1%Trifluoroacetic in 100% acetonitrile		
Total Flow	:1ml/min		
Wavelength	:214nm		
Analytical column type	:Kromasil 100-5-C18 (4.6*250mm*5 µm)		
Dissolution method	:100%H2O		
Inj. Volume	: 20ul		
Time	Module	Action	Value
0.01	Pumps	B.Conc	15
30.00	Pumps	B.Conc	45
33.00	Pumps	B.Conc	100
38.00	Pumps	B.Conc	100
40.00	Pumps	B.Conc	15
50.00	Controller	Stop	

Chromatogram

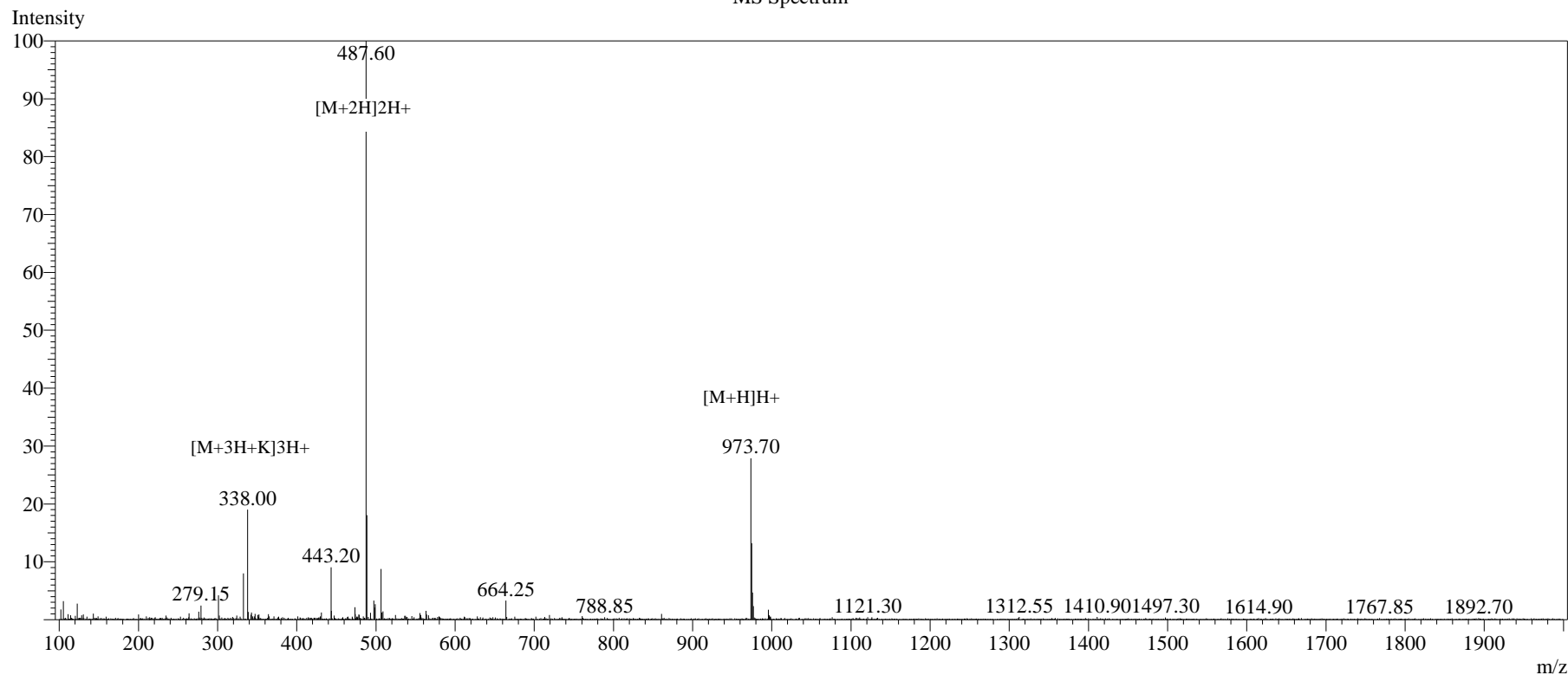


Peak Table

Detector A 214nm

Peak#	Ret. Time	Area	Height	Area%
1	15.687	4466501	354978	99.082
2	15.971	41390	10012	0.918
Total		4507891	364990	100.000

MS Spectrum



Sample Information

Dissolution method	:15%ACN+85%H2O	Interface	:ESI	Prerod Bias	:+4.5kv
Date Acquired	:2025/11/13 10:12:43	Nebulizing Gas Flow	:1.50L/min	Detector	:-0.2kv
Injection Volume	:0.2ul	CDL Temp	:250°C	T.Flow	:0.2ml/min
Block Temp	:200	CDL Volt	:0v	B.conc	:50% H2O/50% MEOH
Order ID	:MTFA33562				
Name	:Inotocin peptide				
Sequence	:C*LITNC*PRG-NH2(Acetate Salt)				
Lot.No	:MTFA33562-251110				
Theoretical	:973.17				
Observed	:973.20				